

# 1" MINI BOURDON TUBE GAUGE

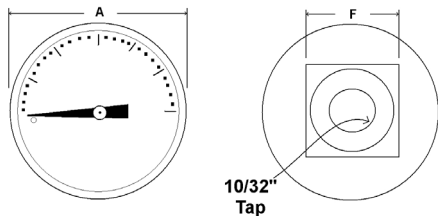
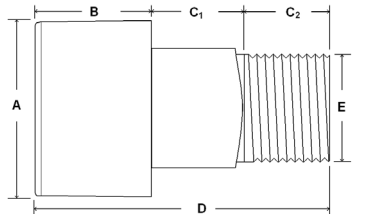


Miniature gauge for applications where space constraints are a concern  
 Suitable for air, water, oil, gas or other media not corrosive to Copper alloy

## SPECIFICATIONS

<b>Dial</b>	1" (25.4 mm)
<b>Case</b>	Black plastic, dry non-fillable
<b>Wetted Parts</b>	Copper alloy
<b>Ranges</b>	0/30, 0/60, 0/100, 0/160 psi
<b>Lens</b>	Plastic
<b>Pointer</b>	Black aluminum
<b>Connection</b>	Center back mount 1/8" NPT with 10/32" tap
<b>Scale</b>	Standard: single scale psi
<b>Accuracy</b>	3-2-3% of span, 1" ASME B40.1 Grade B
<b>Ambient Temp</b>	Dry = -30° F to 180° F

*Design meets or exceeds ASME B40.100 pressure gauge standard.*



Dial	Unit	A	B	C1	C2	D	E	F
1"	In.	0.98"	0.58"	0.34"	0.28"	1.21"	1/8"	0.47"
	mm	25	15	9	7	31	NPT	12

## STANDARD PART NUMBERS

Part Number	Range
102D-108C	0/30 psi
102D-108D	0/60 psi
102D-108E	0/100 psi
102D-108F	0/160 psi
102D-108G	0/200 psi
102D-108H	0/300 psi

## AVAILABLE OPTIONS\*

- Custom Dial
- Special Connection Size
- Other Ranges
- Built-in Snubber

\*Lead times/minimums may apply

## APPROXIMATE SHIPPING WEIGHTS/ BOX QUANTITIES

Dial Size	Est. Unit Wt.	Box Qty
1"	0.05 lbs (0.02 kg)	upon request