

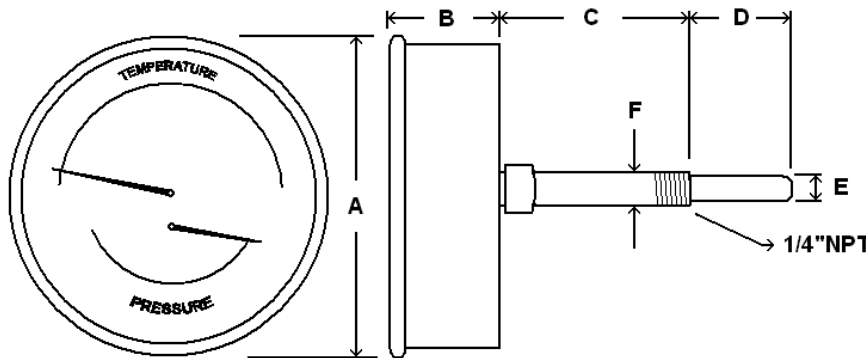
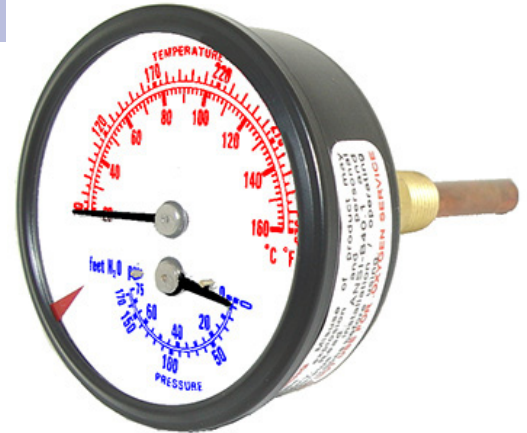
2 1/2" TRIDICATORS



Dual reading pressure and temperature instrument
High quality, economical design for use in commercial and industrial boiler applications

SPECIFICATIONS

Dial	2 1/2" (63 mm)
Case	Black painted steel, dry non-fillable
Stem	1.75", 2.95" or 3.63", copper alloy
Lens	Plastic with red indicator
Pointer	Black aluminum
Connection	Center back mount 1/4" NPT, copper alloy
Scale	Pressure: dual scale psi & ft of water column Temperature: dual scale F & C
Temperature Range	70/320° F & 20/160° C
Accuracy	3-2-3% full scale per Grade B, ASME B40.1
Ambient Temp*	-30° F to 180° F



AVAILABLE OPTIONS*

- Custom Dial
- Special Connection Size
- Single Scale
- Special Ranges
- Custom Lens Material
- Custom Stem Length
- Custom Lagging Dimension
- Stainless Steel Wetted Parts

Dial	Unit	Stem Length	A	B	C	D	E	F
2 1/2"	In.	1.75"	2.64"	1.02"	0.77"	0.96"	0.31"	0.54"
	mm	44.5	67	26	20	25	8	13.6
2 1/2"	In.	2.95"	2.64"	1.02"	2.00"	0.96"	0.31"	0.54"
	mm	75	67	26	51	25	8	13.6
2 1/2"	In.	3.63"	2.64"	1.02"	2.00"	1.60"	0.31"	0.54"
	mm	92.2	67	26	51	41	8	13.6

*Lead times/minimums may apply

APPROXIMATE SHIPPING WEIGHTS/ BOX QUANTITIES

Stem Length	Est. Unit Weight	Box Qty
1.75"	0.30 lbs (0.14 kg)	100
2.95"	0.35 lbs (0.16 kg)	50
3.63"	0.35 lbs (0.16 kg)	50

PART NUMBER	DIAL SIZE	PRESSURE		TEMPERATURE	
		psi	Ft of Water	F	C
TRI-RC-254Rx.xx-D	2 1/2"	0/75	0/170	70-320°	20-160°
TRI-RC-254Rx.xx-E	2 1/2"	0/100	0/230	70-320°	20-160°
TRI-RC-254Rx.xx-G	2 1/2"	0/200	0/460	70-320°	20-160°

Other ranges available upon request.

*NOTE: High or low ambient temperatures may have adverse effect on accuracy. Consult PIC Gauges for instrument selection.