



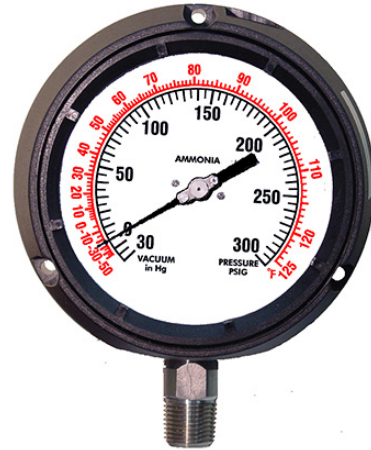
ADDITIONAL AMMONIA GAUGES

Ammonia refrigerant gauges

AMMONIA PROCESS GAUGE SPECIFICATIONS

Dial	4 1/2" (114 mm), 6" (160 mm)
Case	Phenolic - Solid front blow out back on 4 1/2"
	Aluminum with hinged front flange on 4 1/2" & 6"
Wetted Parts	316 stainless steel
Ranges	30/0/150 psi/-40/0/80° F
	30/0/300 psi/-40/0/120° F
Bezel	Removable
Lens	Polycarbonate
Pointer	Adjustable, black aluminum
Connection	Lower mount or lower back mount
	1/4" or 1/2" NPT for 4 1/2" & 6"
Scale	Standard: psi/° F temperature equivalent
Accuracy	0.5% of span on 4 1/2" & 6" ASME B40.1 Grade 2A
Ambient Temp	Glycerine Filled = 30° F to 160° F
	Dry = -30° F to 180° F

Design meets or exceeds ASME B40.100 pressure gauge standard.



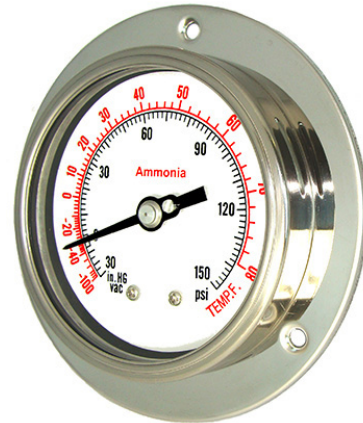
4501 4502 4504 6504
page 58 - page 60

5

AMMONIA PANEL MOUNT SPECIFICATIONS

Dial	2 1/2" (63 mm), 4" (100 mm), 6" (160 mm)
Case	Stainless steel
Wetted Parts	316 stainless steel
Ranges	30/0/150 psi/-40/0/80° F
	30/0/300 psi/-40/0/120° F
Bezel	Stainless steel, removable
Lens	Laminated safety glass
Pointer	Adjustable, black aluminum
Connection	Lower back mount with front flange
	1/4" NPT for 2 1/2"
	1/4" or 1/2" NPT for 4" & 6"
Scale	Standard: psi/° F temperature equivalent
Accuracy	1% of span ASME B40.1 Grade 1A
Ambient Temp	Glycerine Filled = 30° F to 160° F
	Dry = -30° F to 180° F

Design meets or exceeds ASME B40.100 pressure gauge standard.



314D-254/404/6004
page 42 & page 55