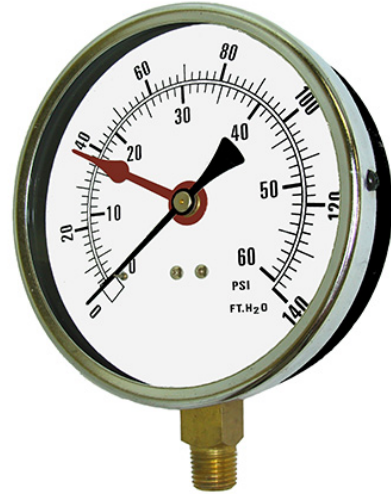


For measuring head pressure, water level/depth in tower, tank or well
 Suitable for air, water, oil, gas or other media not corrosive to copper alloy

SPECIFICATIONS

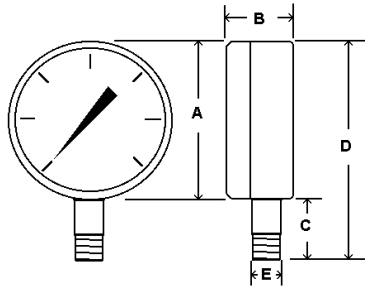
Dial	3 1/2" (89 mm), 4 1/2" (114 mm)
Case	Black steel, dry non-fillable
Wetted Parts	Copper alloy
Ranges	0/15 psi to 0/200 psi
Bezel	Chrome
Lens	Plastic
Pointer	Black aluminum, adjustable red set hand
Connection	Lower mount 1/4" NPT
Scale	Standard: psi/Feet of water column
Accuracy	3-2-3% of span ASME B40.1 Grade B
Ambient Temp	-50° F to 160° F

Design meets or exceeds ASME B40.100 pressure gauge standard.



AVAILABLE OPTIONS*

- Certificate of Accuracy, NIST Traceable
- Custom Dial
- Special Connection Size
- Other Ranges



5

Dial	Unit	A	B	C	D	E
3 1/2"	In.	3.53"	1.14"	1.02"	4.55"	1/4"
	mm	90	29	26	116	NPT
4 1/2"	In.	4.89"	1.16"	1.16"	6.05"	1/4"
	mm	124	29	29	154	NPT

Ranges		
Range Code	psi	Ft. of Water Col.
B	0/15	0/34
C	0/30	0/70
D	0/60	0/140
E	0/100	0/230
F	0/160	0/370
G	0/200	0/460

*Lead times/minimms may apply

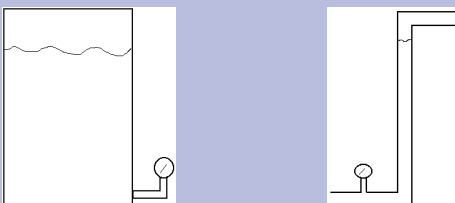
APPROXIMATE SHIPPING WEIGHTS/BOX QUANTITIES

Dial Size	Est. Unit Wt.	Box Qty
3 1/2"	0.5 lbs/(0.24 kg)	upon request
4 1/2"	0.65 lbs/(0.3 kg)	upon request

Dial Size	Standard Part Numbers
3 1/2"	ALTITUDE-354L-RANGE CODE
4 1/2"	ALTITUDE-454L-RANGE CODE

Note:

1. For tower or tank depth or head pressure, gauge should be mounted at the lowest possible point as pressure/depth reading is from gauge level up.



2. For well depth or tank depth where gauge is mounted above max fill line, gauge must be mounted on air line going into top of tank (or well) and straight down vertically to maximum depth to be measured.

