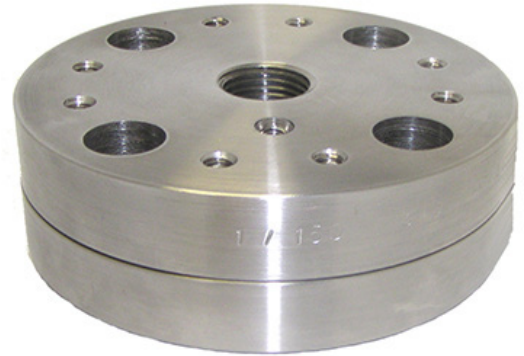


## RF (Raised Face) flanged diaphragm seal

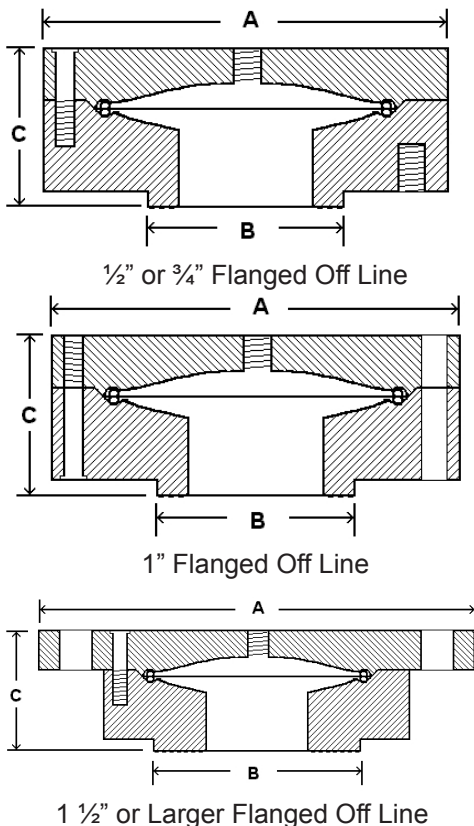
### SPECIFICATIONS

<b>Design</b>	Standard: Diaphragm welded to upper housing Also available: Clamped
<b>Instruments</b>	Gauges, pressure switches, transmitters
<b>Appropriate Dial Size</b>	2 1/2" (63 mm) through 6" (152.4 mm)
<b>Pressures</b>	See ASME B16.5 flange ratings
<b>Upper Housing</b>	Chrome plated carbon steel or stainless steel
<b>Wetted Materials</b>	Standard: Carbon, 304 or 316 stainless steel Also available: Hastelloy® C276, Monel®, Tantalum, PTFE (clamped), Carpenter 20®, Titanium, Others upon request
<b>Process Connection</b>	Available sizes see chart below
<b>Instrument Connection</b>	1/4" FNPT, 1/2" FNPT
<b>Bolts</b>	Galvanized steel (CS upper) Stainless steel (SS upper)
<b>Gaskets</b>	Standard on all stainless: Buna N® Also available: Viton®, PTFE, Grafoil®, others upon request
<b>Process Temperature<sup>1</sup></b>	-4°F to 212°F (-20°C to 100°C)



### AVAILABLE OPTIONS\*

- Flushing (1/4") connection available on lower housing
- RTJ or other facings available upon request
- 600, 900, 1500# flanged available upon request
- Oxygen cleaned
- Material analysis certificate
- High temperature with Grafoil® gasket



\*Lead times/minimums may apply

Process Connection	Flange Rating Class	A	B	C
1/2"	150 #	3 1/2"	1 3/8"	1 3/4"
3/4"		3 3/4"	1 11/16"	1 3/4"
1/2"	300 #	3 3/4"	1 3/8"	1 3/4"
3/4"		4 5/8"	1 11/16"	1 3/4"
1"	150 #	4 1/4"	1 3/8"	1 1/2"
	300 #	4 7/8"	1 9/16"	1 1/2"
600, 900, 1500 # dimensions available upon request.				
1 1/2" or larger	All dimensions according to size and rating of flange.			

Notes:  
1. Process Temperature Rating can vary based on materials of construction, system fill fluid, gaskets and pressure gauge selection.