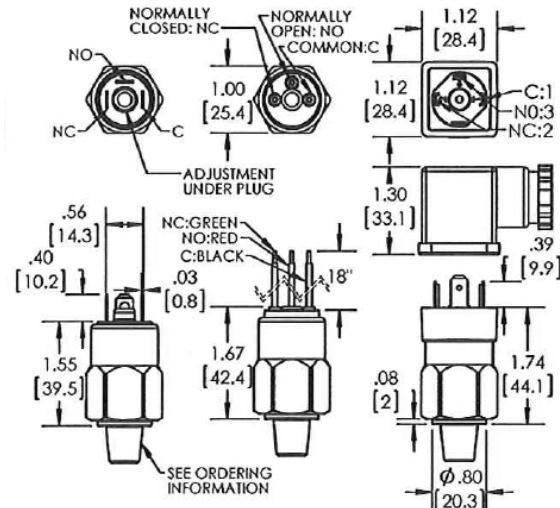


PSA/PSF PRESSURE SWITCH



Color coded top cap for identification of the switch circuit.
A - RED, SPST / NO B - GREEN, SPST / NC C - BLACK, SPDT

Model	Adj. Range		Avg. Different.	
	psi	BAR	psi	BAR
1	10-300	0.7-21	2-35	0.14-2.5
2	125-600	8-41	20-60	1.38-4.1
3	300-2500	21-172	100-320	7-22
4	1000-6000	69-414	250-550	17-38
5	3-20	0.2-1.4	2-5	0.13-0.4
6	15-80	1.03-6	4-7	0.27-0.5
7	40-135	2.7-9.3	7-10	0.5-0.7

CE Approved
RoHS Compliant



ELECTRICAL:

3 AMP - 12/24 VDC - 125/250 VAC
Gold contacts may be required for less than 12 VDC and 20 milliamp
5 AMP Optional

SWITCH TYPE:

Snap Action

TEMPERATURE RANGE:

Buna-N: 15° to +230° F (-10° to 110° C)
EPDM: -10° to +250° F (-23° to 121° C)
KAPTON®: -40° to +230° F (-40° to 110° C)
VITON®: 0° to 250° F (-18° to 121° C)
(® Registered trademark of Dupont)

PROTECTION:

Exposed Terminal - IP00
DIN HC - IP65
Flying Leads & Deutsch Intergral - IP69

REPEATABILITY:

+/- 2% of full set point range at 70°F (20°C)

WETTED MATERIAL:

Diaphragm: Buna-N (Standard)
(optional EPDM, KAPTON®, and Viton®)
Housing: Models 1-4 - Zinc Plated Steel
(Optional 316 SS)
Models 5-7 - Brass (Optional Electroless Nickel Plated Steel)

MECHANICAL LIFE:

1,000,000 cycles

MAX OVERPRESSURE:

Models 1-4: 9000 PSI (600 BAR)
Models 5-7: 350 PSI (24 BAR)

WEIGHT:

Models 1-4: 0.2 lbs (0.09 kg)
Models 5-7: 0.15 lbs (0.07 kg)

ADJUSTMENT:

Use 5/64" Allen Key

ORDERING INFORMATION

PS(X)	-*2	-*R	-4M	-C	-H	-*1
Model	Set Point	Direction	Port Size	Circuit	Terminal	Options
PSA - Field Adjustable	See above adjustment ranges	R = psi Rising F = psi Falling BR = BAR Rising BF = BAR Falling	2M - 1/8 NPT 4M - 1/4 NPT 2G - 1/8 BSPP 4G - 1/4 BSPP 4S - 7/16X20 SAE MALE 4SW - 7/16X20 SAE SWIVEL 6S - 9/16X18 SAE MALE	A - SPST/NO B - SPST/NC C - SPDT	SP - 1/4"X1/32" Spade TS - 6-32 Terminal Screws FL - 18" Flying Leads WTF - Weatherpack Tower Female WTM - Weatherpack Tower Male WSF - Weatherpack Shroud Female WSM - Weatherpack Shroud Male H - DIN 43650A Male Half Only HC - DIN 43650A Cable clamp HN - DIN 43650A 1/2 Conduit (female) DR - Deutsch Receptacle DP - Deutsch Plug DI - Deutsch Integral	* -Omit if standard 1-Viton® Diaphragm 2-EPDM Diaphragm 3-Kapton® Diaphragm 4-316SS Housing 5-Spiral Restrictor 6-Oxygen Cleaned 7-Gold Contacts 9-5AMP Rating 10-Electroless Nickel Plated Steel Housing 11A-DIN Light NO/NC 110v 11B-DIN Light NO/NC 12VDC 11C-DIN Light NO/NC 24VDC 11D-Indicating Light 12-WRAS Approved for models 6-7 only
PSF - Factory Set	*Model PSF Set Point required	*Omit for PSA	Metric and other sizes available by special order			