

# S301L HEAVY DUTY 4" ALL STAINLESS LOWER MOUNT

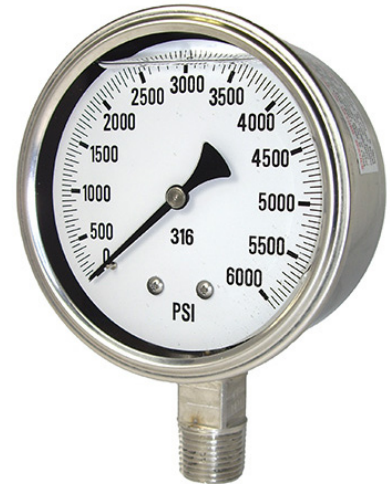


Heavy duty, all stainless steel gauge with welded case-to-stem connection  
 Stainless steel case and bezel, 316 stainless steel internals  
 Glycerine filled for added durability in applications where vibration or pulsation is present

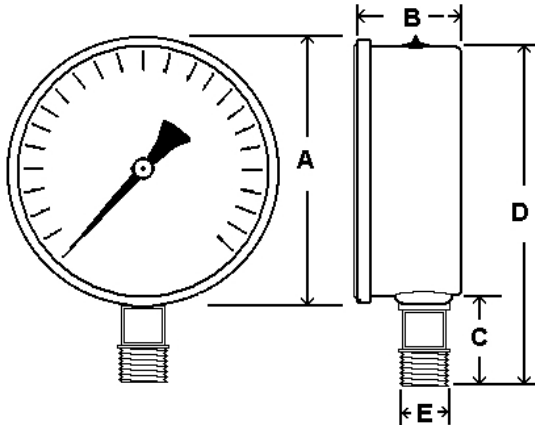
## SPECIFICATIONS

<b>Dial</b>	4" (100 mm)
<b>Case</b>	Stainless steel, glycerine filled
<b>Wetted Parts</b>	316 stainless steel
<b>Bezel</b>	Stainless steel, fixed
<b>Lens</b>	Polycarbonate
<b>Pointer</b>	Black aluminum
<b>Connection</b>	Lower mount 4" dial = 1/4" or 1/2" NPT
<b>Scale</b>	Standard: single scale psi
<b>Accuracy</b>	1% of span 4" ASME B40.1 Grade 1A
<b>Ambient Temp</b>	Glycerine Filled = 30° F to 160° F Dry = -30° F to 180° F

*Design meets or exceeds ASME B40.100 pressure gauge standard.*



3



Dial	Unit	A	B	C	D	E
4"	In.	4.07"	1.94"	1.46"	5.32"	1/4" or
	mm	103	49	37	135	1/2" NPT

## AVAILABLE OPTIONS\*

- Certificate of Accuracy, NIST traceable
- Custom Dial
- Liquid Fill Options, see page 177
- Anti-Vibration Movement, see page 109
- Cleaned for Oxygen Service (dry only)
- Special Connection Size
- Protective Rubber Cover, see page 121
- Max/Min Pointer, see page 122

\*Lead times/minimums may apply

## APPROXIMATE SHIPPING WEIGHTS/ BOX QUANTITIES

Dial Size	Est. Unit Weight	Box Qty
4"	0.35 lbs (0.16 kg)	20

## STANDARD DIAL CONFIGURATIONS

Dial Range	Figure Intervals	Graduation Intervals	Dial Range	Figure Intervals	Graduation Intervals
30/0"hg Vac	3" hg	0.2" hg	0/600 psi	50 psi	5 psi
0/15 psi	1 psi	0.1 psi	0/1000 psi	100 psi	10 psi
0/30 psi	3 psi	0.2 psi	0/1500 psi	200 psi	10 psi
0/60 psi	5 psi	0.5 psi	0/2000 psi	200 psi	20 psi
0/100 psi	10 psi	1 psi	0/3000 psi	500 psi	20 psi
0/160 psi	20 psi	2 psi	0/5000 psi	500 psi	50 psi
0/200 psi	20 psi	2 psi	0/6000 psi	500 psi	50 psi
0/300 psi	30 psi	2 psi	0/10,000 psi	1000 psi	100 psi
0/400 psi	50 psi	5 psi	0/15,000 psi	3,000 psi	100 psi

NOTE: Because of continuing improvements, increments/specifications are subject to change without notice. Stock ranges vary by dial size and configuration. Consult PIC Gauges for availability.