

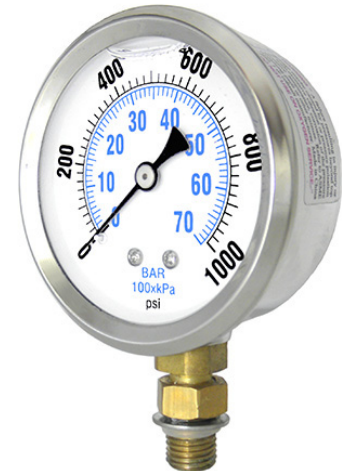
# SAE-201L LOWER MOUNT



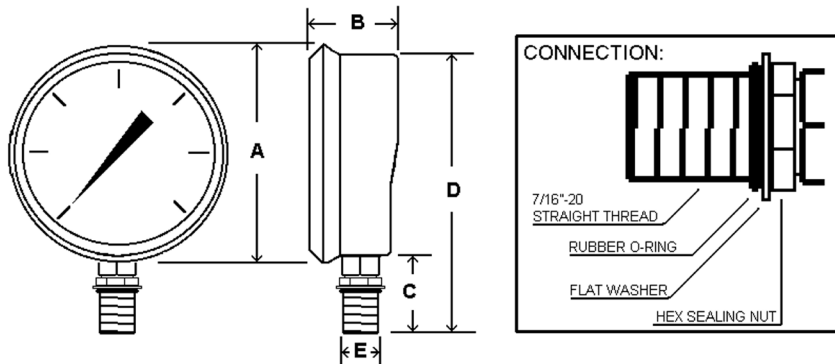
Glycerine filled gauge with SAE4 connection  
Suitable for air, water, oil, gas or other media not corrosive to Copper alloy

## SPECIFICATIONS

<b>Dial</b>	2 1/2" (63 mm)
<b>Case</b>	Stainless steel, glycerine filled
<b>Wetted Parts</b>	Copper alloy
<b>Ranges</b>	30" Hg Vac/0 - 0/10,000 psi
<b>Bezel</b>	Stainless steel, fixed
<b>Lens</b>	Plastic
<b>Pointer</b>	Black aluminum
<b>Connection</b>	Lower mount 7/16"-20 SAE connection with silicon rubber o-ring, washer and lock nut
<b>Scale</b>	Standard: dual scale psi/BAR (x 100 = kPa)
<b>Accuracy</b>	2-1-2% of span, ASME B40.1 Grade A
<b>Ambient Temp</b>	Glycerine Filled = 30° F to 160° F Dry = -30° F to 180° F



Design meets or exceeds ASME B40.100 pressure gauge standard.



## AVAILABLE OPTIONS\*

- Certificate of Accuracy, NIST Traceable
- Custom Dial
- Special Connection Size
- Center Back Mount
- Other Ranges

5

\*Lead times/minimums may apply

Dial	Unit	A	B	C	D	E
2 1/2"	In.	2.80"	1.28"	1.07"	3.55"	7/16-20 SAE
	mm	71	33	27	90	

## SAE PART NUMBERS

Part Number	Dial Range	Part Number	Dial Range
201L-25XA-SAE4	30/0" Hg vac	201L-25XM-SAE4	0/1000 psi
201L-25XC-SAE4	0/30 psi	201L-25XN-SAE4	0/1500 psi
201L-25XD-SAE4	0/60 psi	201L-25XO-SAE4	0/2000 psi
201L-25XE-SAE4	0/100 psi	201L-25XP-SAE4	0/3000 psi
201L-25XF-SAE4	0/160 psi	201L-25XQ-SAE4	0/4000 psi
201L-25XG-SAE4	0/200 psi	201L-25XR-SAE4	0/5000 psi
201L-25XI-SAE4	0/400 psi	201L-25XS-SAE4	0/6000 psi
201L-25XJ-SAE4	0/500 psi	201L-25XU-SAE4	0/10,000 psi
201L-25XK-SAE4	0/600 psi		

## APPROXIMATE SHIPPING WEIGHTS/ BOX QUANTITIES

Dial Size	Est. Unit Wt.	Box Qty
2 1/2"	0.45 lbs (0.22 kg)	upon request