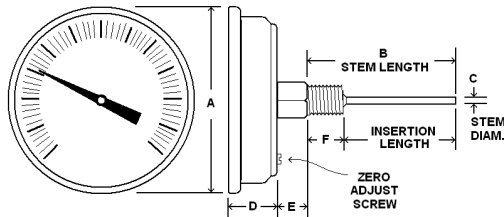
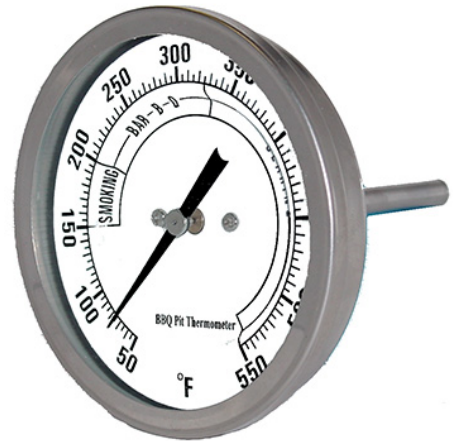


Miscellaneous bimetals designed for specific applications

SPECIFICATIONS - BARBEQUE GRILL THERMOMETER (BBQ-1)

Dial Size	3" (76 mm)
	Anti-parallax dial
Case	All stainless steel construction
Stem Length	2 ½", 316 stainless welded at connection
Connection	½" NPT
Lens	Heavy duty glass
Pointer	Black aluminum
Scale	Standard: single scale F
Temperature Range	50/550° F
Accuracy	1% full scale
External Adjustment	Zero reset screw on case back

Design meets or exceeds ASME B40.3 thermometer standard.



Part Number	Dial	Unit	A	B	C	D	E	F
BBQ-1	3"	In.	3.28"	2.5"	0.25"	0.82"	0.43"	½"
		mm	83	63	7	21	11	NPT

AVAILABLE OPTIONS*

- Other stem lengths available upon request

*Lead times/minimums may apply

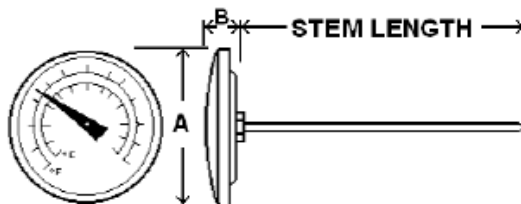
SPECIFICATIONS - 1" DIAL SIZE POCKET THERMOMETER (B1B5)

Dial Size	1" (25.4 mm)
Case	All stainless steel with plastic sleeve clip case
Stem Length	5"
Stem Construction	1/8" diameter pointed plain stem (non-threaded)
Lens	Magnifying plastic
Pointer	Red aluminum
Scale	Standard: single scale °F
Temperature Range	-40/160° to 50/550° F
Accuracy	+/- 1.5% full scale

Design meets or exceeds ASME B40.3 thermometer standard.



Part Number	Range
B1B5-B	-40/160°F
B1B5-D	25/125°F
B1B5-H	0/220°F
B1B5-R	50/550°F



Dial	Unit	A	B
1"	In.	1.03"	0.51"
	mm	26	13

AVAILABLE OPTIONS*

- Other stem lengths available upon request
- 2" dial size available upon request
- Digital version available

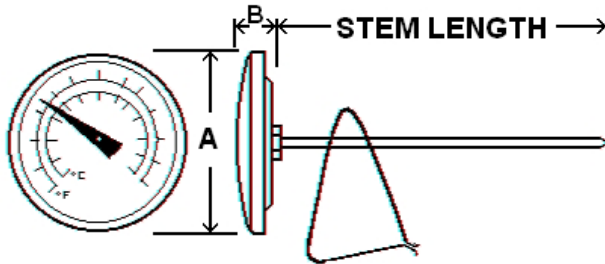
*Lead times/minimums may apply

Miscellaneous bimetals designed for specific applications

SPECIFICATIONS - 2" CLIP STYLE THERMOMETER

Dial Size	2" (50 mm)
Case	All stainless steel with stainless steel clip
Stem Length	6", 8", 12"
Lens	Plastic
Pointer	Black aluminum
Scale	Standard: single scale F
Temperature Range	50/550° F
Accuracy	+/-1.5% full scale
Part Number	B2BX-R-CLIP

Design meets or exceeds ASME B40.3 thermometer standard.



AVAILABLE OPTIONS*

- Other stem lengths available upon request

Part Number	Stem Length
B2B6-R-CLIP	6"
B2B8-R-CLIP	8"
B2B12-R-CLIP	12"

Dial	Unit	A	B
2"	In.	2.05"	0.41"
	mm	52	10.5

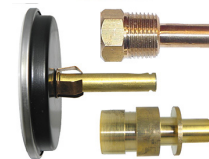
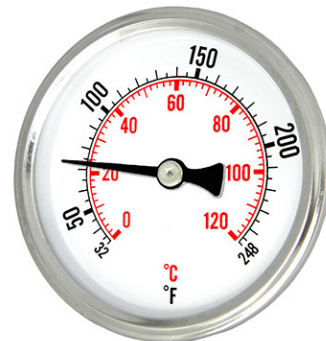
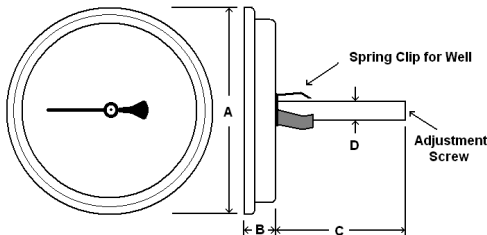
*Lead times/minimums may apply

SPECIFICATIONS - HOT WATER THERMOMETER (B2B1-K-XX)

Dial Size	2 1/2" (63 mm)
Case	Steel
Stem Length	2" with Copper alloy thermowell or NPT
Bezel	Stainless steel
Lens	Plastic
Pointer	Black aluminum
Scale	Standard: dual scale F & C
Temperature Range	32/248° F & C
Accuracy	+/- 2% full scale
Thermowell (included)	1/2" NPT Copper alloy threaded or solder type

Design meets or exceeds ASME B40.3 thermometer standard.

Part Numbers
 B2B1-K-SW = Solder well
 B2B1-K = 1/2" NPT



AVAILABLE OPTIONS*

- Other stem lengths available upon request
- Other temperature ranges

*Lead times/minimums may apply

Dial	Unit	A	B	C	D
2"	In.	2.52"	0.45"	1.71"	0.32"
	mm	64	11	43	8