

SURFACE MOUNT THERMOMETERS

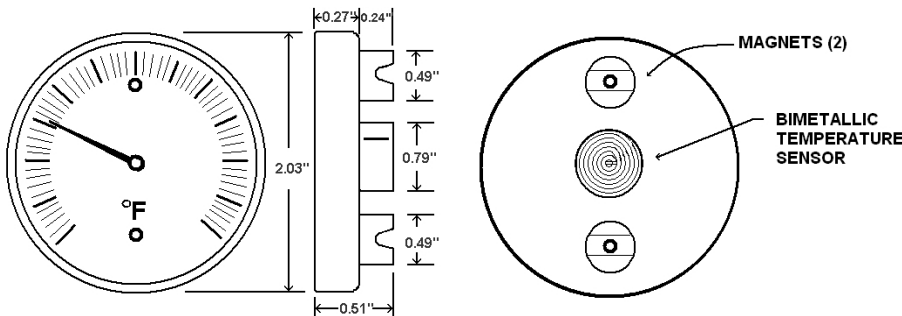
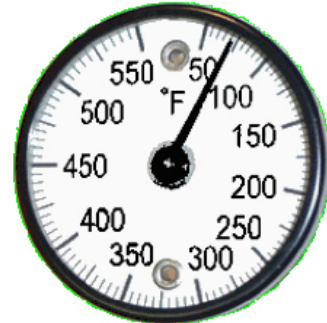


Miscellaneous bimetals designed for specific applications

SPECIFICATIONS - MAGNETIC THERMOMETER (B2MS)

Dial Size	2" (50 mm)
Case	Black steel
Bezel	Black steel
Stem Length	Surface thermometer - no stem
Lens	Glass
Pointer	Black aluminum
Scale	Standard: single scale F
Temperature Range	-100/160° to 50/750° F
Accuracy	+/-3%

Design meets or exceeds ASME B40.3 thermometer standard.



Part Number	Range	Part Number	Range
B2MS-A	-100/160°F	B2MS-Q	0/500°F
B2MS-E	0/150°F	B2MS-S	50/750°F
B2MS-I	0/250°F		

AVAILABLE OPTIONS*

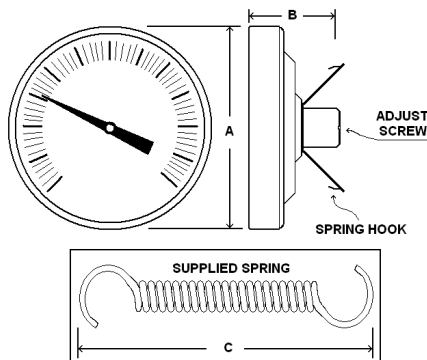
- Custom dials
- Custom temperature ranges

*Lead times/minimums may apply

SPECIFICATIONS - SURFACE THERMOMETER (B2SS)

Dial Size	2 1/2" (63 mm)
Case	Stainless steel case
Stem Length	Surface thermometer - no stem Clamp on design with spring
Lens	Glass
Pointer	Black aluminum
Scale	Standard: single scale F
Temperature Range	-50/250° to 0/250° F
Accuracy	+/-3%

External Adjustment Zero reset screw on stem
Design meets or exceeds ASME B40.3 thermometer standard.



Dial	Unit	A	B	C
2 1/2"	In.	2.50"	1.23"	2.74"
	mm	63	31	70

Part Number	Range
B2SS-A	-50/250°F
B2SS-E	0/150°F
B2SS-I	0/250°F



AVAILABLE OPTIONS*

- Custom dials
- Custom temperature ranges

*Lead times/minimums may apply